



# GERBI

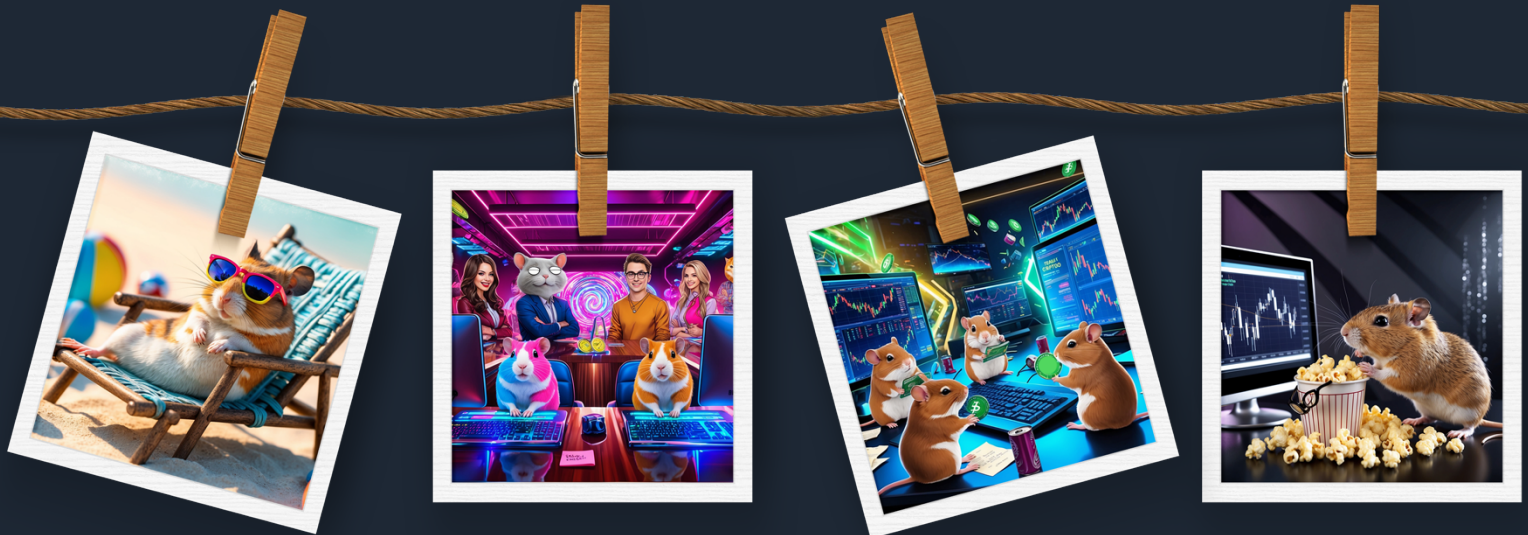


# WELCOME



WELCOME TO THE OFFICIAL WHITE PAPER OF \$GERBi, A PIONEERING MEME COIN BUILT ON THE SOLANA BLOCKCHAIN. \$GERBi IS MORE THAN JUST A MEME COIN; IT REPRESENTS A NEW PARADIGM IN THE CRYPTOCURRENCY WORLD WHERE FUN MEETS FINANCIAL OPPORTUNITY. OUR VISION IS TO CREATE A VIBRANT, ENGAGED COMMUNITY THAT BENEFITS FROM BOTH THE ENTERTAINMENT VALUE AND THE FINANCIAL POTENTIAL OF \$GERBi.

AT \$GERBi, OUR MISSION IS TO MERGE THE PLAYFUL SPIRIT OF MEME COINS WITH ADVANCED FINANCIAL STRATEGIES, ENSURING SECURITY AND PROFITABILITY FOR OUR INVESTORS. WE ARE COMMITTED TO MAINTAINING TRANSPARENCY AND FOSTERING COMMUNITY INVOLVEMENT IN EVERY STEP OF OUR JOURNEY.

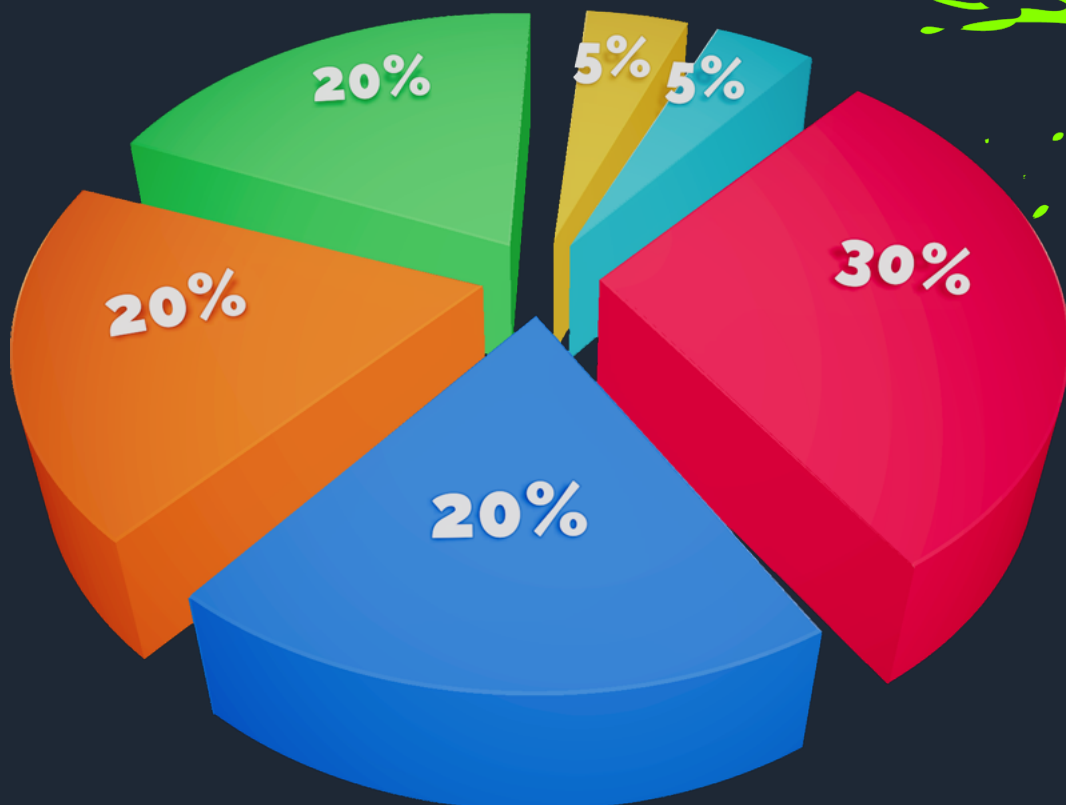


THIS WHITE PAPER PROVIDES AN IN-DEPTH LOOK AT OUR STRATEGIC PLAN, DETAILING THE PHASES OF OUR TOKEN PRESALE, THE ROADMAP FOR FUTURE DEVELOPMENTS, AND THE ROBUST SECURITY MEASURES WE HAVE IMPLEMENTED. JOIN US AS WE REVOLUTIONIZE THE MEME COIN SPACE AND CREATE A THRIVING ECOSYSTEM FOR \$GERBi HOLDERS.


# TOKENOMICS

THE TOTAL SUPPLY OF \$GERBI IS FIXED AT 1,000,000,000 TOKENS. THIS SUPPLY IS ALLOCATED STRATEGICALLY TO ENSURE LIQUIDITY, INCENTIVIZE EARLY INVESTORS, AND FUND ONGOING DEVELOPMENT AND MARKETING EFFORTS.

THIS STRATEGIC DISTRIBUTION ENSURES THAT \$GERBI HAS THE NECESSARY LIQUIDITY, REWARDS EARLY SUPPORTERS, AND PROVIDES FUNDING FOR CONTINUOUS GROWTH AND MARKETING, ALL WHILE MAINTAINING A TRANSPARENT AND SECURE STRUCTURE.



## ALLOCATION BREAKDOWN

-  PHASE #1 PRESALE: 20% OF TOTAL SUPPLY (200,000,000 \$GERBi) AT 0.00005 PER TOKEN
-  PHASE #2 PRESALE: 30% OF TOTAL SUPPLY (300,000,000 \$GERBi) AT 0.0007 PER TOKEN
-  LIQUIDITY POOL: 20% OF TOTAL SUPPLY (200,000,000 \$GERBi) TO ENSURE SUFFICIENT LIQUIDITY ON EXCHANGES.
-  RESERVE: 20% OF TOTAL SUPPLY (200,000,000 \$GERBi) FOR FUTURE DEVELOPMENT
-  TEAM AND ADVISORS: 5% OF TOTAL SUPPLY (50,000,000 \$GERBi) WITH A 12-MONTH VESTING PERIOD TO ALIGN INTERESTS WITH LONG-TERM PROJECT SUCCESS.
-  MARKETING AND DEVELOPMENT: 5% OF TOTAL SUPPLY (50,000,000 \$GERBi) TO FUND PROMOTIONAL ACTIVITIES AND ONGOING PROJECT DEVELOPMENT.



# ROADMAP

## AUGUST 2024

- **LAUNCH OF PRESALE:** INITIATE THE FIRST PHASE OF OUR TOKEN PRESALE, RELEASING 20% OF THE TOTAL SUPPLY AT THE INITIAL PRICE.
- **TOKEN DEVELOPMENT:** FINALIZE THE DEVELOPMENT OF THE \$GERBi TOKEN, ENSURING ROBUST SECURITY AND FUNCTIONALITY.
- **WEBSITE LAUNCH:** UNVEIL THE OFFICIAL GERBi WEBSITE TO PROVIDE DETAILED INFORMATION AND UPDATES.

## OCTOBER 2024

- **PHASE #2 PRESALE:** COMMENCE THE SECOND PHASE OF THE TOKEN PRESALE, INTRODUCING THE NEXT 30% OF THE SUPPLY AT AN INCREASED PRICE.
- **COMMUNITY ENGAGEMENT:** BEGIN STRATEGIC MARKETING CAMPAIGNS TO GROW AND ENGAGE THE \$GERBi COMMUNITY.



## NOVEMBER 2024

- **DEX INTEGRATION:** LIST \$GERBi ON MAJOR DECENTRALIZED EXCHANGES AND ESTABLISH LIQUIDITY POOLS TO ENSURE SMOOTH TRADING AND LIQUIDITY.



## DECEMBER 2024

- **CEX LISTINGS:** START LISTING \$GERBi ON CENTRALIZED EXCHANGES TO INCREASE ACCESSIBILITY AND MARKET REACH.
- **MARKET EXPANSION:** FOCUS ON EXPANDING THE MARKET PRESENCE AND BUILDING PARTNERSHIPS WITH KEY INDUSTRY PLAYERS.



## 2025 AND BEYOND

- **PRICE GROWTH:** CONTINUE PROMOTING \$GERBi TO DRIVE VALUE APPRECIATION AND MARKET RECOGNITION.
- **COMMUNITY BUILDING:** FOSTER A STRONG, ENGAGED COMMUNITY THROUGH CONTINUOUS SUPPORT AND DEVELOPMENT.
- **GLOBAL RECOGNITION:** ELEVATE \$GERBi TO A RENOWNED TOKEN IN THE CRYPTO SPACE THROUGH STRATEGIC MARKETING AND COLLABORATIONS.





# SECURITY MEASURES



HOLDERS IS A TOP PRIORITY. WE HAVE IMPLEMENTED SEVERAL MEASURES TO PROTECT THE INTEGRITY OF OUR TOKEN AND PLATFORM:

- **SMART CONTRACT AUDITS:** OUR SMART CONTRACTS UNDERGO RIGOROUS AUDITS BY REPUTABLE THIRD-PARTY FIRMS TO IDENTIFY AND MITIGATE ANY VULNERABILITIES.
- **SECURE DEVELOPMENT PRACTICES:** OUR DEVELOPMENT TEAM FOLLOWS BEST PRACTICES IN SECURE CODING AND REGULARLY UPDATES THE PLATFORM TO ADDRESS ANY POTENTIAL SECURITY THREATS.
- **TRANSPARENCY:** WE MAINTAIN TRANSPARENCY WITH OUR COMMUNITY BY PROVIDING REGULAR UPDATES AND REPORTS ON SECURITY MEASURES AND ANY INCIDENTS.





- **REVOKED MINT AND FREEZE AUTHORITY:** TO ENSURE THE SECURITY AND TRUSTWORTHINESS OF THE \$GERBI TOKEN, THE MINT AND FREEZE AUTHORITY FOR THE TOKEN HAVE BEEN PERMANENTLY REVOKED.
- **BURNING LIQUIDITY POOL TOKENS:** TO FURTHER SECURE THE ECOSYSTEM, ALL LIQUIDITY POOL TOKENS WILL BE BURNED 100% AFTER CREATING THE LIQUIDITY POOLS ON EXCHANGES. THIS ENSURES THAT THE LIQUIDITY CANNOT BE WITHDRAWN, ADDING AN ADDITIONAL LAYER OF SECURITY FOR OUR INVESTORS.



## COMMUNITY INVOLVEMENT

- **GOVERNANCE:** \$GERBI HOLDERS WILL HAVE THE OPPORTUNITY TO PARTICIPATE IN GOVERNANCE DECISIONS, HELPING TO SHAPE THE FUTURE DIRECTION OF THE PROJECT.
- **REWARDS AND INCENTIVES:** WE OFFER VARIOUS INCENTIVES AND REWARDS TO ACTIVE COMMUNITY MEMBERS WHO CONTRIBUTE TO THE GROWTH AND DEVELOPMENT OF \$GERBI.



## TRANSPARENCY & COMMUNICATION

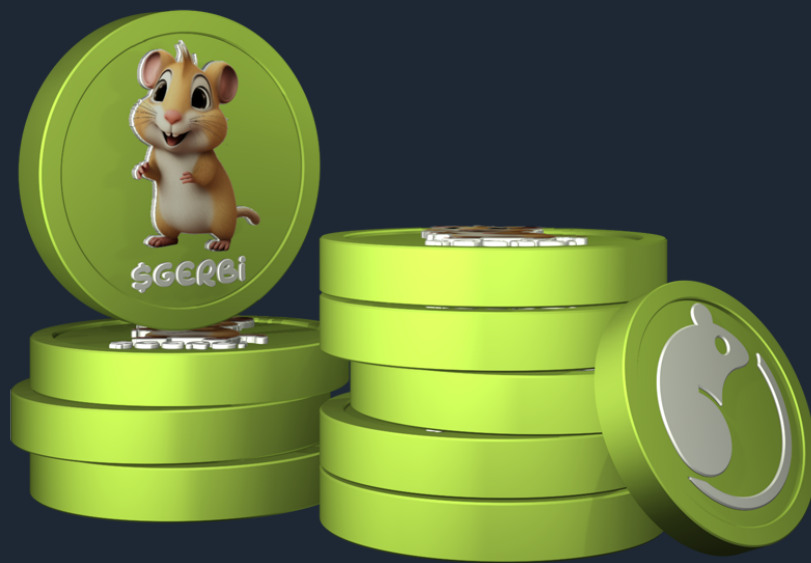
- **REGULAR UPDATES:** WE PROVIDE REGULAR UPDATES ON PROJECT DEVELOPMENTS, MILESTONES, AND ANY CHANGES TO THE ROADMAP.
- **OPEN CHANNELS:** WE MAINTAIN OPEN COMMUNICATION CHANNELS THROUGH SOCIAL MEDIA, FORUMS, AND OUR OFFICIAL WEBSITE TO ENSURE THAT COMMUNITY MEMBERS ARE ALWAYS INFORMED AND ENGAGED.



# CONCLUSION



THE \$GERBi PROJECT IS POISED TO MAKE A SIGNIFICANT IMPACT IN THE MEME COIN SPACE BY COMBINING THE PLAYFUL NATURE OF MEMES WITH ROBUST FINANCIAL STRATEGIES AND COMMUNITY ENGAGEMENT. WE INVITE YOU TO JOIN US ON THIS EXCITING JOURNEY AS WE BUILD A SECURE, PROFITABLE, AND ENTERTAINING ECOSYSTEM FOR ALL \$GERBi HOLDERS.



[GERBi.io/TOKEN](https://gerbi.io/token)

